

LASTRA ARQUITECTOS

PORTFOLIO OF WORK

CONTENT

HOW WE WORK

LASTRA ARQUITECTOS

SELECTED PROJECTS RECENT WORK

HOW WE WORK

LASTRA ARQUITECTOS approach is three-fold: to be innovative, responsive, and specific. The practice develops projects that are uniquely designed to meet the required functions and the needs of each user, to be meaningful to their context and fulfil their potential. These custom-made solutions evolve through a process of intense on-site study, programmatic and material research, and, above all, dialogue with the parties involved. Of most importance is a close relationship between the client and the design team from conception to completion of the project. We endeavor to start each new project without predetermined ideas, even with a conscious naivety coupled with curiosity, in order to produce unexpected and original results. We try to observe, respond, and nurture the history and spirit of each place on every project.

Our working process cannot be understood without a strong collaboration with all kind of specialists, including engineers, landscape architects, MEP, etc. During this process we produce drawings, 3D models, computer generated images as well as working models. LASTRA ARQUITECTOS as an organization, is enthusiastic about digital processes that improve the predictability and reliability of the construction coordination processes.

LASTRA ARQUITECTOS follows the project through all phases, from concept study to final realization in order to ensure the continuity and highest quality of design. LASTRA ARQUITECTOS provides primary leadership in the design process, and our on-site presence and continuous involvement until completion of each of our projects, even being ourselves constructors, gives us the opportunity to control and assure a high construction quality.

LASTRA ARQUITECTOS

LASTRA ARQUITECTOS was founded in Mexico City by Rodrigo García Lastra in 2010. Since then, the firm has designed and built numerous diverse projects and participated in the production of artwork with different visual artists. Its diverse body of work includes cultural, residential and commercial buildings and spaces for the public and private sectors.

The firm drives architectural ambitions that share a commitment to the collaborative aspect of architectural creation. The practice's work is characterized by meticulous attention to the concept and details of each project, and a relentless focus on refining design ideas to arrive at a constructive solution that is architecturally, socially and intellectually coherent.



SELECTED WORKS

HOTEL JUAREZ CENTRO HISTORICO CDMX

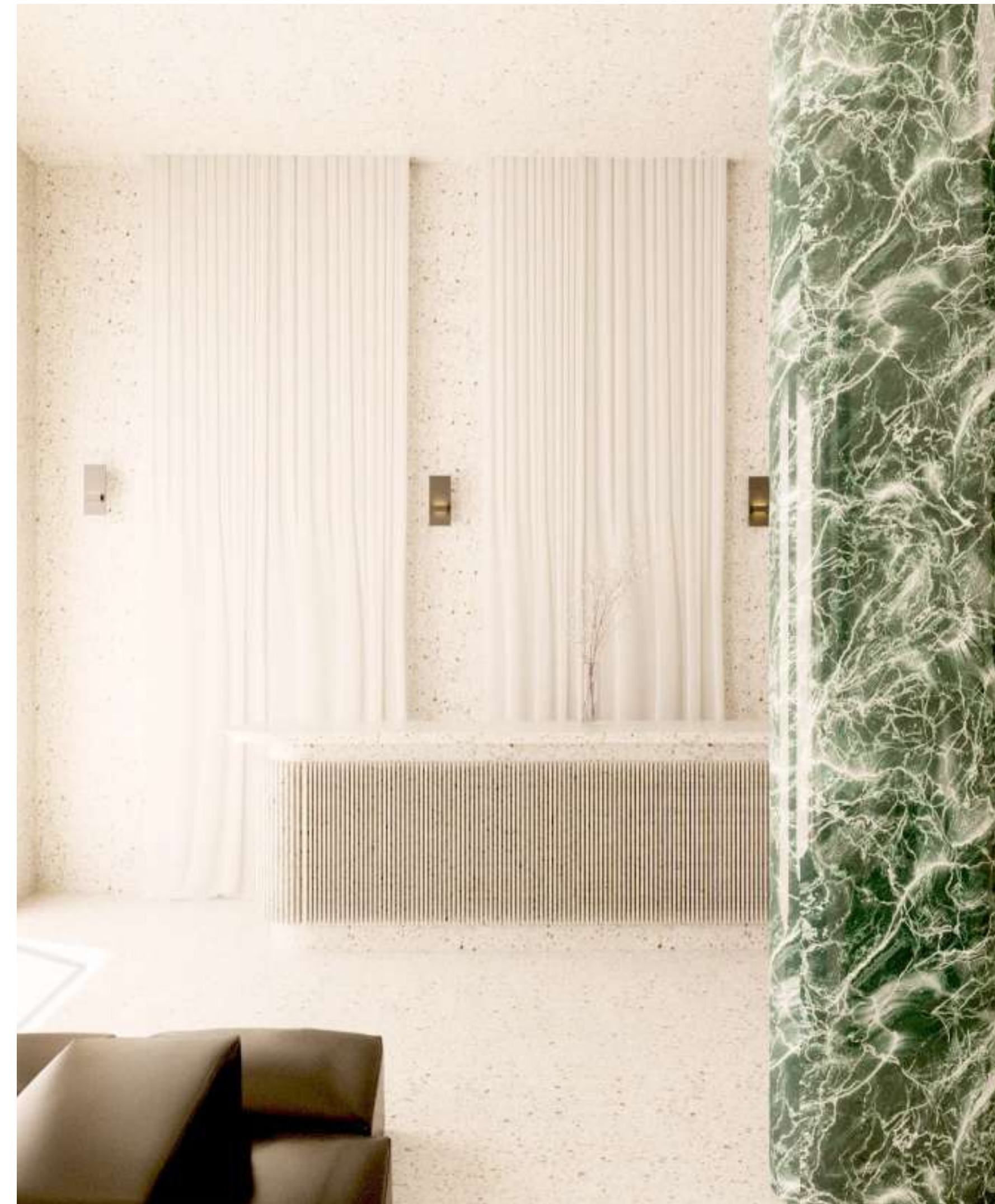
Surface: 6000 m2
Client: PARICULAR
Budget: 4,000,000.00 USD

HOTEL AND COMERCE

We are inspired by the history of the center of Mexico City, the meeting between historical layers, ancestral ruins, houses colonials, the 18th century patios, the great architecture French neoclassical and finally the revolutionary buildings mid-century modern. We want to undertake an exercise of trying to harmoniously synthesize this rich history in one single place. Given the location of the project, it is imperative for any architectural exercise to establish a dialogue of respect and familiarity with one of the great symbols of Mexico City, the Palace of Fine Arts.

Finding this synthesis between the classic and the modern, between the historical layers and contemporaneity, will ensure a project with civic responsibility. Starting the search for the answer between respect for history and a new icon in the historic center, we hope to honor the identity of the city of Mexico in the 21st century. We trust that this new vision of hospitality, its generous terrace with peripheral views, its restaurants, and commercial spaces with easy and intuitive access. So, they will become an attractive pilgrimage site to visit both national and international. The Hotel Juarez not only satisfies will meet the needs of your visitors, but will become an essential aspect of your experience in the city. The city is enjoying global attention as a destination, and this new place, with its modern spirit, but at the same time respectful of the history, will continue to raise the Mexican identity.







CORNER OFFICE BUILDING AND STORES POLANCO CDMX

Surface: 4000 m2
Client: PARICULAR
Budget: 7,000,000.00 USD
OFFICE AND COMERCE

Located in the heart of Polanco, Ciudad de México, this contemporary four-story office and commercial building seamlessly blends modern design with functional efficiency.

The façade features sleek lines, large glass windows, and a combination of concrete and steel elements, reflecting the area's urban character while offering ample natural light and stunning views of the surrounding cityscape.

Upon entering the building, visitors are greeted by a spacious lobby adorned with minimalist décor and high-quality finishes.

The ground floor houses a dynamic mix of retail spaces, including trendy boutiques and upscale cafes, catering to both residents and visitors alike. Each floor offers a mix of private offices, collaborative workspaces, and meeting rooms, fostering creativity and productivity among tenants. The top floor is dedicated to a rooftop terrace, providing a serene oasis amidst the bustling city below. Here, tenants can unwind, socialize, and enjoy panoramic views of Polanco while taking advantage of outdoor seating areas and lush greenery. Overall, this contemporary building in Polanco sets a new standard for urban architecture, combining aesthetic appeal with functional design to create a vibrant and dynamic space for both work and leisure.

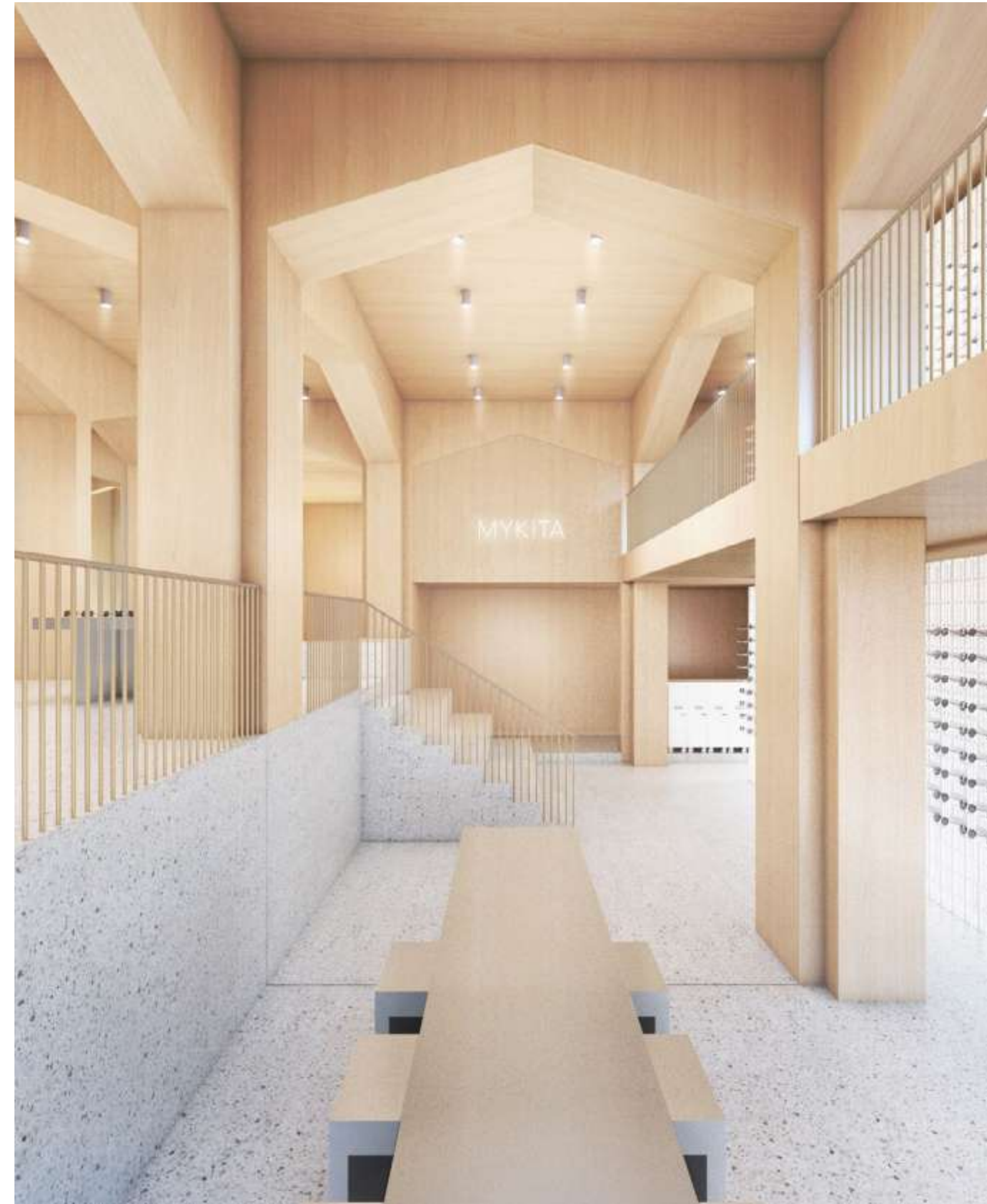


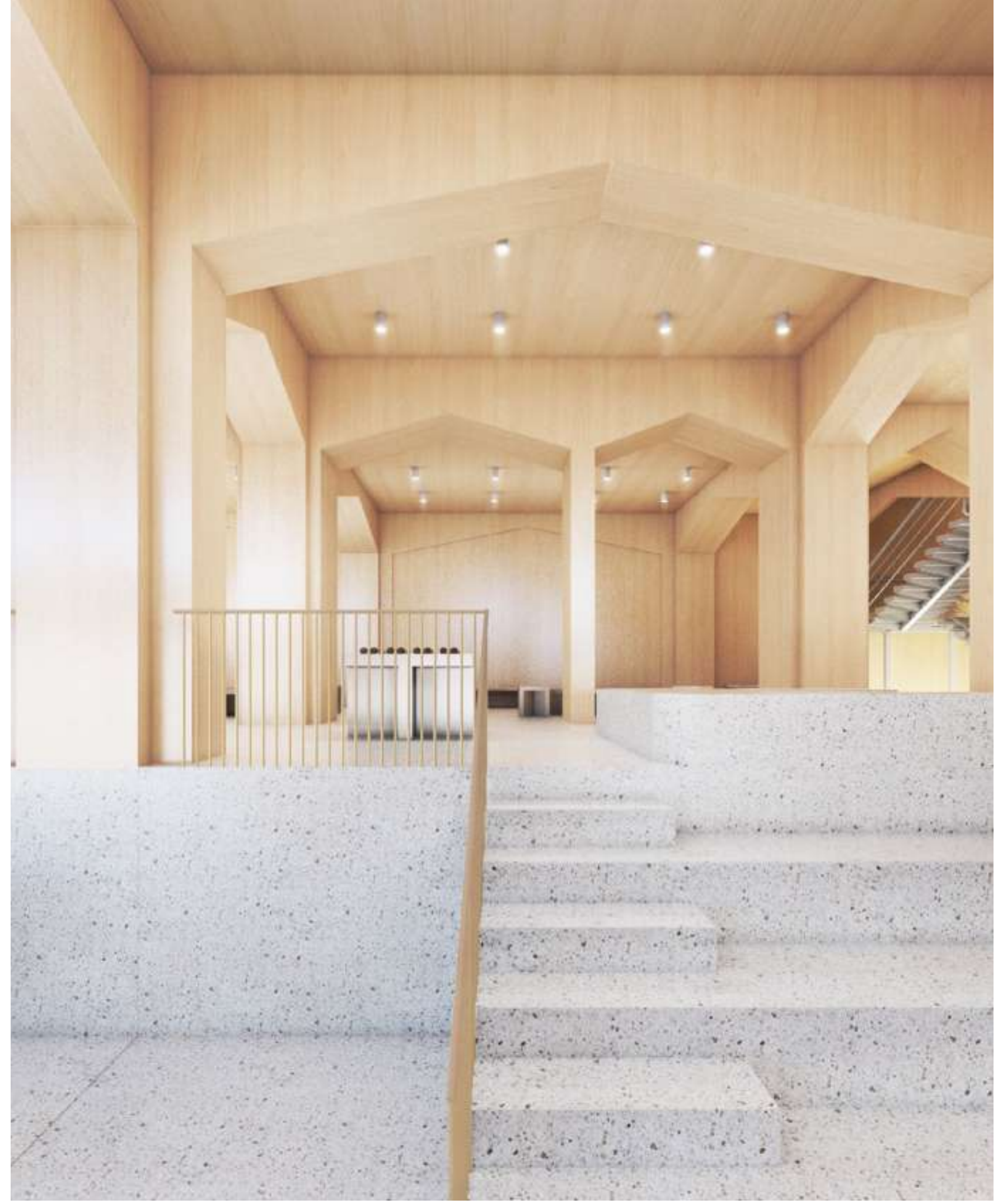


MYKITA FLAGSHIP STORE MEXICO CITY COLONIA ROMA CDMX

Surface: 680 m2
Client: PARICULAR
Budget: 200.000.00 USD
OFFICE AND COMERCE

The project was born as a direct reference to the archetypal German house and the logo of MYKITA, the design strategy is also a need to provide order and coherence space in an open 70s building with a series of disordered columns, for Through the interpretation of the logo we create a more interesting spatial journey. With the use of another material different from that of the facade we also managed to create a showcase or a “jewelry box” inside the premises. This type of thinking is fundamental in 21st century retail, creating a experiential destination, rather than just a shopping space. In this way, the objective of The architecture was to create a cathedral from the existing structure and the triple spaces. height, a shopping spectacle, made for contemplation and rest, as well as for trade. This project is a testament to the vision of a brand and the future of commerce retail





CASA SMM

Realization: 2021 - 2023
Surface area: 900 m²
Budget: 1,200,000.00 usd
Client: Private

This family house is located in Cumbres de Santa Fe, an area of rolling hills to the north-west of Mexico city. Presenting itself as a traditional Mexican patio house, the two-storey house is embedded in a field facing south towards the valley. A deep loggia stretching across the entire width of the building mediates between the private interior space and the patio.

The main living spaces open onto the loggia and the patio. The courtyard varies in character and provides close contact with a natural garden and a fountain while the main living quarters offer views into the valley. This courtyard also provides access to the various areas of the house and to the loggia through an opening which also separates the guest quarters from the main body of the house.

This All-white concrete house presents itself like a large monolithic contemporary sculpture yet reminds the visitor of the traditional Mexican patio house.







CASA PIRAMIDES MÉRIDA, YUCATÁN

Project: 2019
Surface: 260 m²
Client: Pedro Reyes
Budget: -

Private House in Mérida for Pedro Reyes

The House in Mérida is the result of a collaboration between Rodrigo García Lastra and the artist Pedro Reyes in 2019. The project is a clear example of an habitable sculpture: a house formed by two towers that evoke the symmetry of the major temple in ancient Tenochtitlán. The elongated slope is a resource present in the late modernism of the 1970s as well as the brutalist treatment of the blind concrete facades. They are cast with wooden planks with intervals equal to those of the stepbacks. This way, when approaching the house it seems to face two gigantic steep staircases that can even defy their very function, enhancing the project monumentality.





BASALTA HOUSE

ROMA NORTE, MEXICO CITY

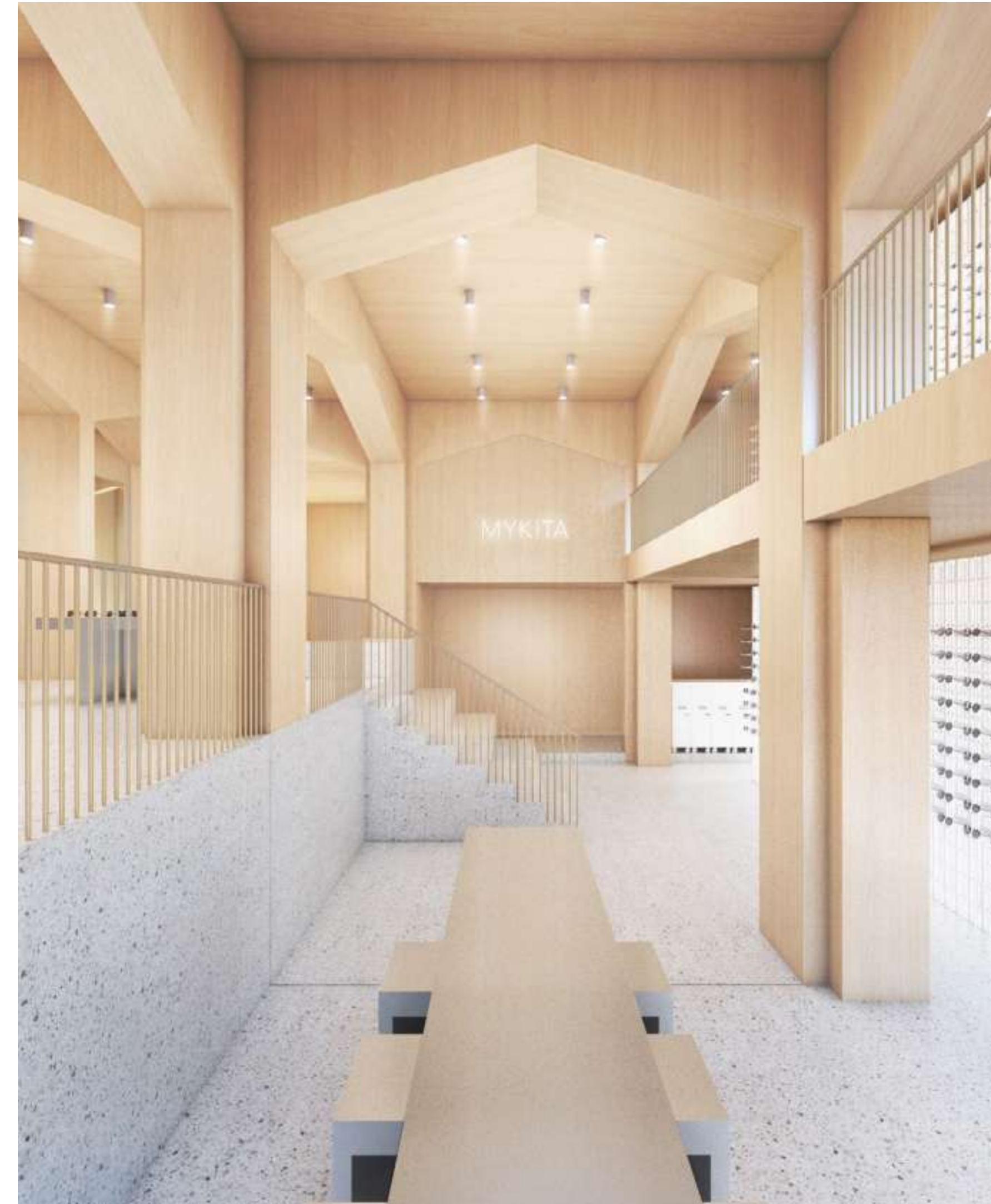
Execution: 2017 - 2018

Surface: 2,160 m²

Client: Private

The project consisted of the conservation of the house that dates back to 1910, which was intervened in a manner such that the architectural program adapted to the mansion itself and at the same time generated new spaces that would complement the house, making a connection between old and contemporary, creating a harmonious balance between both.

The design premise of the house is to revive Mexican architecture from its different eras, integrating elements that characterize each of them. A clear example is the implementation of hanging planters, resembling pre-Hispanic landscaping and the use of enclosure dust partitions, where the latter is the analogy in the materiality used since ancient times in the different Mexican buildings and in turn serves as a contrast between the modern elements and framing the original.



BASALTA HOUSE

ROMA NORTE, MEXICO CITY

Execution: 2017 - 2018

Surface: 2,160 m²

Client: Private

The project consisted of the conservation of the house that dates back to 1910, which was intervened in a manner such that the architectural program adapted to the mansion itself and at the same time generated new spaces that would complement the house, making a connection between old and contemporary, creating a harmonious balance between both.

The design premise of the house is to revive Mexican architecture from its different eras, integrating elements that characterize each of them. A clear example is the implementation of hanging planters, resembling pre-Hispanic landscaping and the use of enclosure dust partitions, where the latter is the analogy in the materiality used since ancient times in the different Mexican buildings and in turn serves as a contrast between the modern elements and framing the original.







AMY STORE
ROMA NORTE, MEXICO CITY

Development: 2018 - 2019

Surface: 100 m2

Client: Private

Budget: 150,000.00 USD

Refurbishment and conversion of a Porfirian House into a new Store space.

The new space for Amy Store is located in the inside of a Porfirian house in Roma Norte neighbourhood. The entire floor surface of the new commercial space is covered with an artigian Terrazzo. This classical technique has been translated and implemented in a contemporary way and it is also used for the built-in furniture. The brass displayers, besides functioning as a shelf, are conceived as a sculptural piece. Concentrated in the center of the store, they also act as a main light source for the entire commercial space.





Produced in CDMX, Mexico
2024

This document is property of LASTRA ARQUITECTOS. It may not be used or reproduced in any manner,
in whole or in part without the prior writtten permission of PARABASE x LASTRA ARQUITECTOS.

©2024